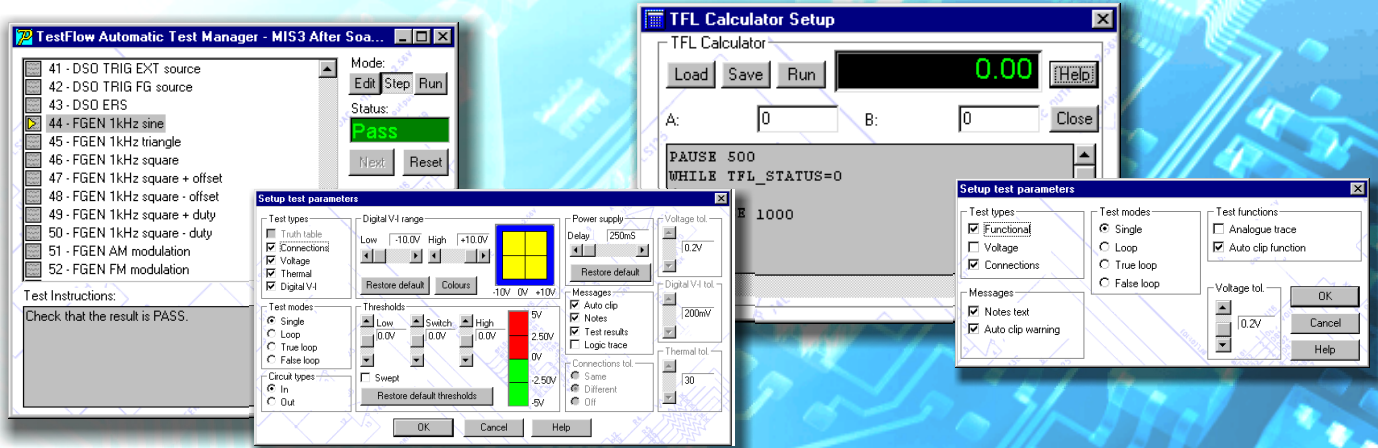


# SYSTEM 8 Premier



- User Access Manager
- TestFlow automatic test procedures
- Instrument Design Manager
- Instrument Menu Manager
- Calculator function
- Flexible data logger
- Instrument and procedure control

## Advanced Control Software

### User Access Manager

The User Access Manager allows the system to be configured according to the skill level or job function of the operator, including passwords if required.

Access to instruments can be restricted which avoids confusion and reduces operator error.

Access can also be restricted to instrument design and menus, test procedure editing and user configuration.

This prevents authorised operators from changing standard settings and procedures.

